



# Remote and Cabin Control Searchlights for Vessels of all sizes



HR-1170 Metal Halide

HRL-2070 LED



[www.amisales.com.au](http://www.amisales.com.au)

**Australian Offices:**  
Perth (08) 9331 0000  
Gold Coast (07) 5540 6800  
Gold Coast Showroom  
(07) 5540 6880

Sydney (02) 9816 7100  
Adelaide (08) 8249 3200  
Melbourne (03) 5978 0143  
Cairns (07) 4050 0000  
Darwin (08) 8981 6651

**International Offices:**  
Singapore +65 6775 0081  
Vietnam +84 (254) 3513 345

ACN 009 010 422 / ABN 88 569 498 390

# HR-55 HALOGEN LAMP

This single beam searchlight is built to the same high standards as it's big brother's with no compromise on quality. The fully waterproof, robust casting is made from die cast aluminium and in a hard white coating. The reflector is an optically perfect parabolic mirror, which projects the one hundred thousand candlepower for up to 500 metres. The remote control panel has an on - off switch and touch buttons for rotation and elevation.

AMI Code	Description	Sub control panel
1440044	HR-55 DC12V 55W	1440907 Sub control panel CPF-84
1440052	HR-55 DC24V 70W	
Main Control Panel included		

Reflector dia.	$\phi 110\text{mm}$	
Rated voltage	DC12V	DC24V
Rated current	5A	3A
Lamps	Halogen lamp H2 12V 55W	Halogen lamp H2 24V 70W
Max. luminous intensity	100,000cd	80,000cd
Beam spread	Approx. 7°	
Range (1lx)	Approx. 300m	Approx. 280m
Focus adjustment	Fixed	
Elevation & Turning	Electric remote control	
Elevation angle	Up 20° Down 20°	
Turning angle	360°(endless)	
Elevation speed	Approx. 5.7°/sec.	
Turning speed	Approx. 27°/sec.	
Material	Aluminum alloy die casting	
Protection degree	IP56	
Weight	2.9kg	
Color	Munsell N-9.5 (White)	
Code no.	1154-1	1154-2

Dimension and specification are remote control type

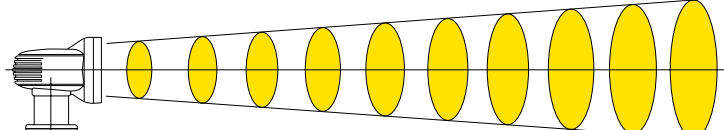


## Range of 55W Halogen search light

- Lamp ..... Halogen 12V55W
- Beam spread.....7°
- Max. luminous intensity.....100,000cd
- Atmospheric transmission factor.....100%

Diameter of beam limits (Beam limits are 10% maximum luminous intensity) (m $\phi$ )

6.1 12.3 18.4 24.6 30.7 36.8 43.0 49.1 55.3 61.4



40.0 10.0 4.5 2.5 1.6 1.1 0.8 0.6 0.5 0.4

Illuminance of beam axis(lx)

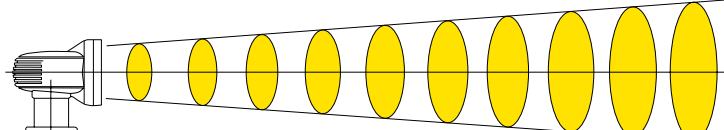
Calculated range (m)

## Range of 70W Halogen search light

- Lamp ..... Halogen 24V70W
- Beam spread.....7°
- Max. luminous intensity.....80,000cd
- Atmospheric transmission factor.....100%

Diameter of beam limits (Beam limits are 10% maximum luminous intensity) (m $\phi$ )

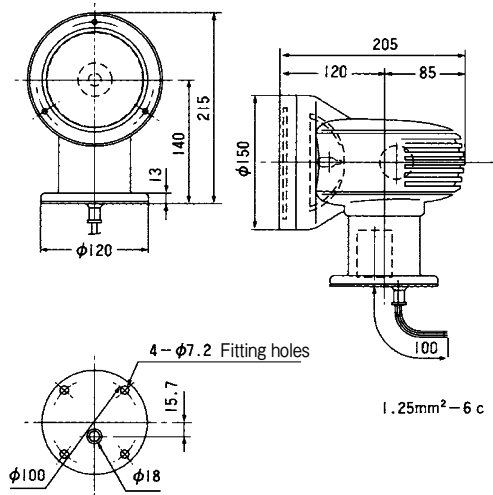
6.1 12.3 18.4 24.6 30.7 36.8 43.0 49.1 55.3 61.4



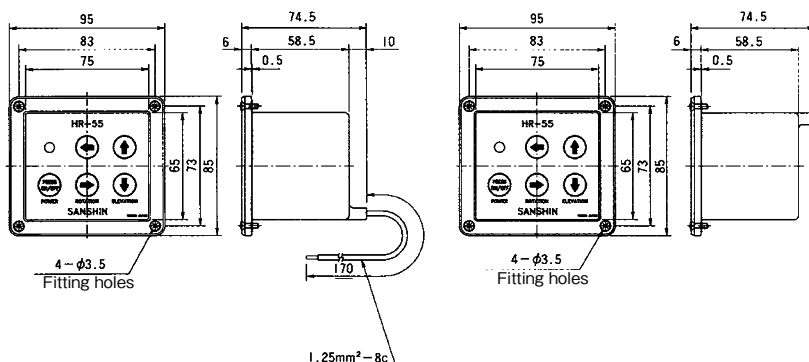
32 8.0 3.6 2.0 1.3 0.9 0.7 0.5 0.4 0.3

Illuminance of beam axis(lx)

Calculated range (m)



1.25mm<sup>2</sup>-6 c



CPF-79(Main)

CPF-84(Sub)

## Remote control panel



Available 2-station control by a sub remote control panel (Option)

# HR-1012 HALOGEN LAMP

Designed to blend in with the modern design of today's powerboats and commercial vessels. The robust casting is made from die cast aluminium and finished in a hard white coating. The reflectors are optically perfect mirrors, which projects two hundred thousand candlepower for up to 500 metres. The remote control panel has an on - off switch and touch buttons for rotation and elevation. This twin beam spotlight sets the standards in design and technology. Standard with main control panel.

AMI Code	Description	Sub control panel
1440060	HR-1012 DC12V 55W	1440902 Sub control panel CPF-54
1440061	HR-1012 DC24V 55W	
Main Control Panel included		

Reflector dia.	$\phi 110\text{mm} - 70\text{cut}$	
Rated voltage	DC12V	DC24V
Rated current	10A	5A
Lamps	Halogen lamp 55W x 2 (G6.35) JCD12V-55WDX JCD24V-55WDX	
Max. luminous intensity	200,000cd	160,000cd
Beam spread	Right & Left	Approx. 7°
	Up & Down	Approx. 5°
Range (1lx)	Approx.440m	Approx.400m
Focus adjustment	Fixing	
Elevation & Turning	Electric remote control	
Elevation angle	Up 9° Down 17°	
Turning angle	360°(endless)	
Elevation speed	Approx. 2.8° / sec.	
Turning speed	High 31°/sec.	
	Low 20°/sec.	
Material	Aluminum alloy die casting	
Protection degree	IP56	
Weight	3.25kg	
Color	Munsell N-9.5 (White)	
Code no.	U Type 1151U	U Type 1152U
	G Type 1151G	G Type 1152G

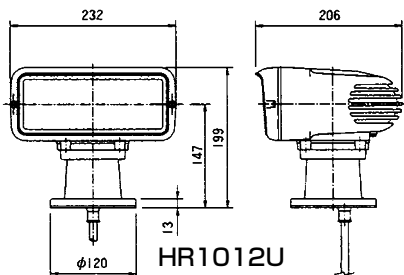


Dimension and specification are remote control type

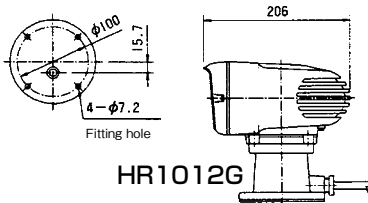
## Range of 55W x 2 Halogen search light 12V

- Lamp ... Halogen 12V55W X 2
- Beam spread ... 5° (Verticality) X7° (Horizontal)
- Max. luminous intensity ... 200,000cd
- Atmospheric transmission factor ... 100%

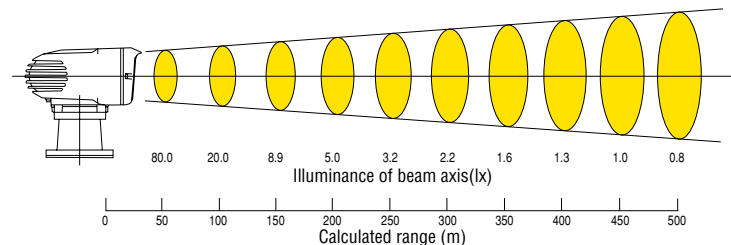
Diameter of beam limits(Beam limits are 10% maximum luminous intensity) (mΦ)  
4.4X6.1 8.7X12.3 13.1X18.4 17.5X24.6 21.9X30.7 26.2X36.8 30.6X43.0 35.0X49.1 39.4X55.3 43.7X61.4



HR1012U



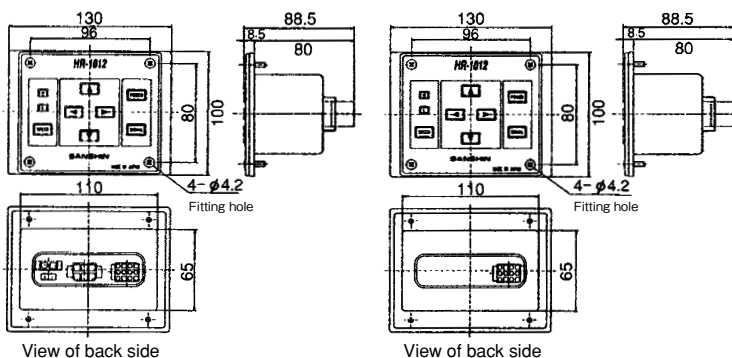
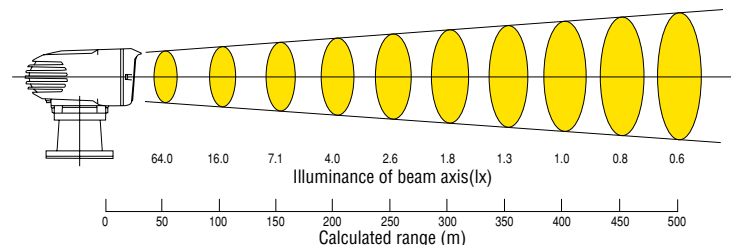
HR1012G



## Range of 55W x 2 Halogen search light 24V

- Lamp ... Halogen 24V55W X 2
- Beam spread ... 5° (Verticality) X7° (Horizontal)
- Max. luminous intensity ... 160,000cd
- Atmospheric transmission factor ... 100%

Diameter of beam limits(Beam limits are 10% maximum luminous intensity) (mΦ)  
4.4X6.1 8.7X12.3 13.1X18.4 17.5X24.6 21.9X30.7 26.2X36.8 30.6X43.0 35.0X49.1 39.4X55.3 43.7X61.4



CPF-53(Main)

CPF-54(Sub)

## Remote control panel



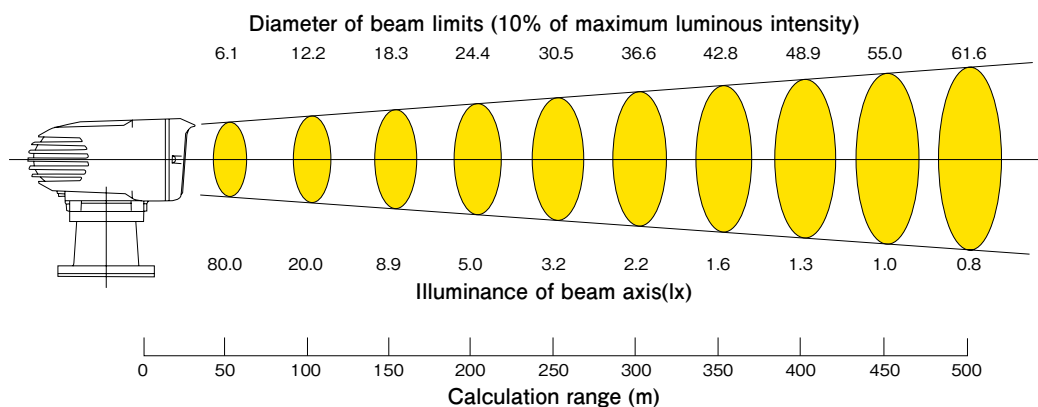
Available 2-station control by a sub remote control panel (Option)

# HRL-2070 LED

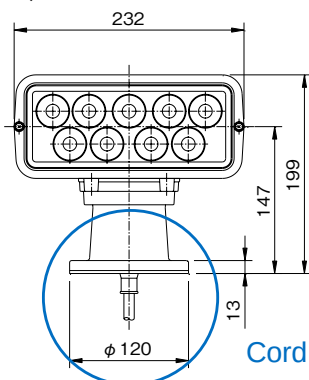
The same standard in brightness as the HR-1012 halogen light, the LED variation eliminates bulb replacement and offers a long life of approximately 40,000 hours. Suitable for both 12 and 24 Volt systems, this search light offers the same strong casing and design as other lights in the range. Standard with main control panel.

AMI Code	Description	Sub control panel
1440068	HRL-2070U DC12/24V	See HR-1012 Model on previous page for compatible remotes.
HRL-2070U configuration is standard		

<b>Material</b>	Aluminum alloy die casting
<b>Input voltage</b>	DC12V / DC24V
<b>Input power</b>	Approx. 3.0A (12V) / 1.6A (24V)
<b>Max. luminous intensity</b>	200,000 cd
<b>Beam spread</b>	Approx.. 7°
<b>Operation method</b>	Electric remote control or wireless control
<b>Remote control panel</b>	CPF53 (Main) / CPF54 (Sub)
<b>Elevation angle</b>	Up 9° Down 17°
<b>Turning angle</b>	360° (endless)
<b>Elevation speed</b>	Approx. 2.8°/ sec
<b>Turning speed</b>	High 30°/ sec. Low 20°/ sec.
<b>Color</b>	Munsell N9.5 (White)
<b>Weight</b>	Approx. 4.2kg
<b>IP Rated</b>	IP56
<b>Code</b>	U Type 11511U / G Type 11511G

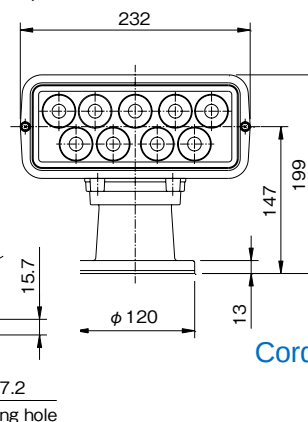


## ◆HRL-2070U

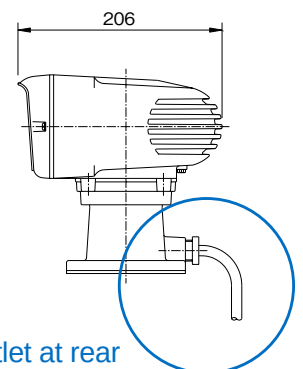


Cord outlet at base

## ◆HRL-2070G



Cord outlet at rear



## Like to Upgrade your HR-1012 Model to low maintenance LED?

Convert your HR1012 to LED HRL-2070 with Sanshin's LED Upgrade module. **AMI Code: 1441001**



## Very Simple to upgrade

Just remove faceplate, connect the LED and secure fasteners ready for install onto the vessel.



# HRL-2070MU LED (WIRELESS)

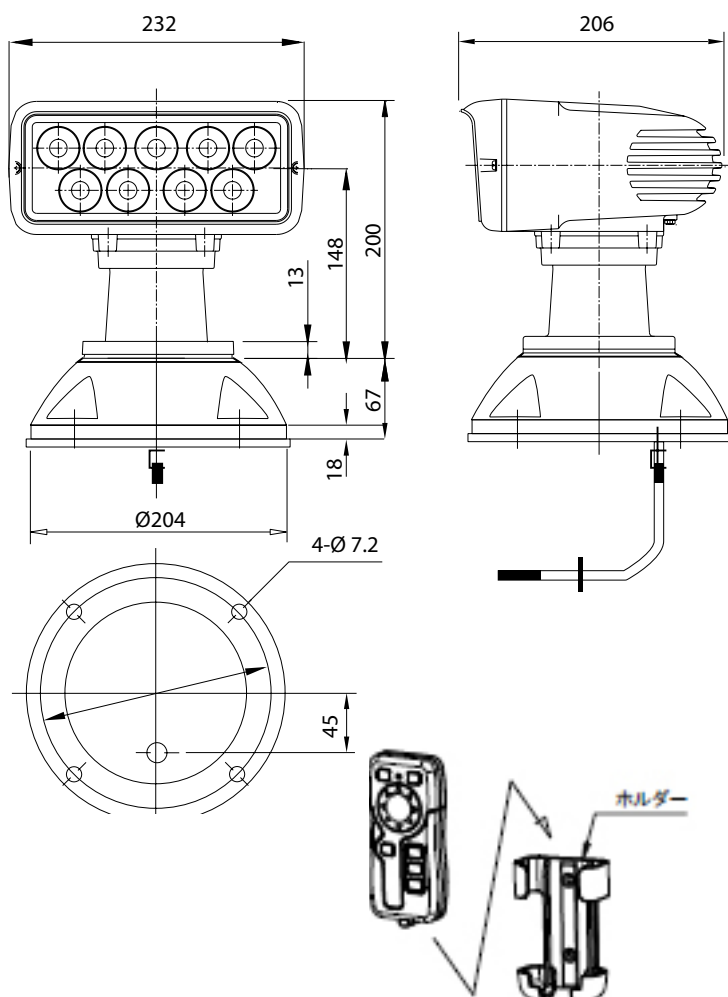
Offering the same features as the HRL-2070 U and G Models, the HRL-2070MU LED is a wirelessly controlled searchlight available in both DC 12V and DC 24V. Remote cradle available for WCS-02 remote. Standard with wireless control panel.

AMI Code	Description
1440069	HRL-2070MU DC12/24V Wireless type

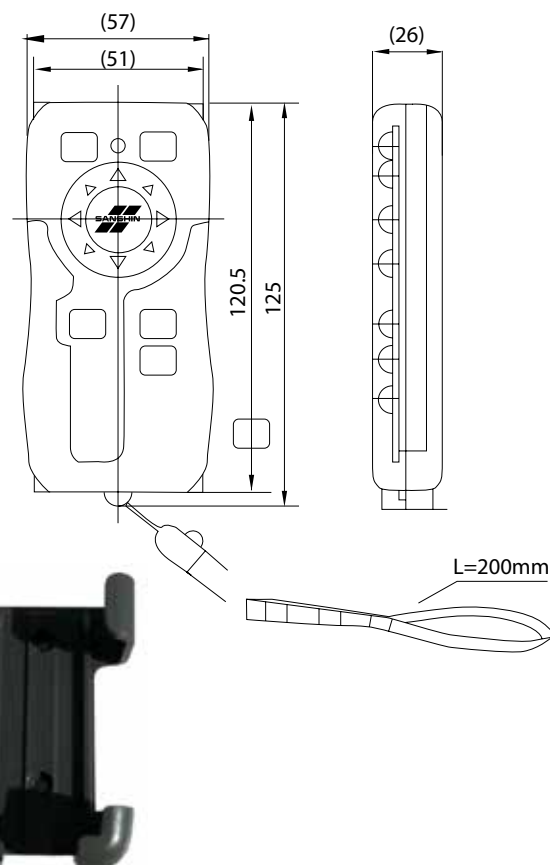
<b>Material</b>	Aluminum alloy die casting
<b>Input voltage</b>	DC12V / DC24V
<b>Input power</b>	Approx. 3.5A (12V) / 2.0A (24V)
<b>Max. luminous intensity</b>	200,000 cd+
<b>Beam spread</b>	Approx.. 7°
<b>Operation method</b>	Wireless control WCS-02 (max. 2 lights can be controlled)
<b>Remote control panel</b>	CPF53 (Main) / CPF54 (Sub)
<b>Elevation angle</b>	Up 9° Down 17°
<b>Turning angle</b>	360° (endless)
<b>Elevation speed</b>	Approx. 2.8°/ sec
<b>Turning speed</b>	High 31°/ sec. Low 20°/ sec.
<b>Color</b>	Munsell N9.5 (White)
<b>Weight</b>	Approx. 6.0kg
<b>IP Rated</b>	IP56



## ◆ HRL-2070MU



## ◆ WCS-02



# ROBO MODULAR SEARCHLIGHTS LED

New LED operation in addition to Xenon, metal halide and halgen types. Modular construction is stronger and more resistant to vibration in marine environments than conventional design. Saves energy, using only a sixth (40W) of wattage compared to halogen lamp types. Long lifetime of operation, lasting over 40,000 hours.

AMI Code	Description	Control panel
1441148	RGL-40D Manual Control Type DC24V 40W	-
1441149	RGL-40C Cabin Control Type DC24V 40W	-
1441150	RGL-40E Remote Control Type (with control panel) DC24V 40W	1440906 For RGL-40E

Remote control type  
(RGL40E)



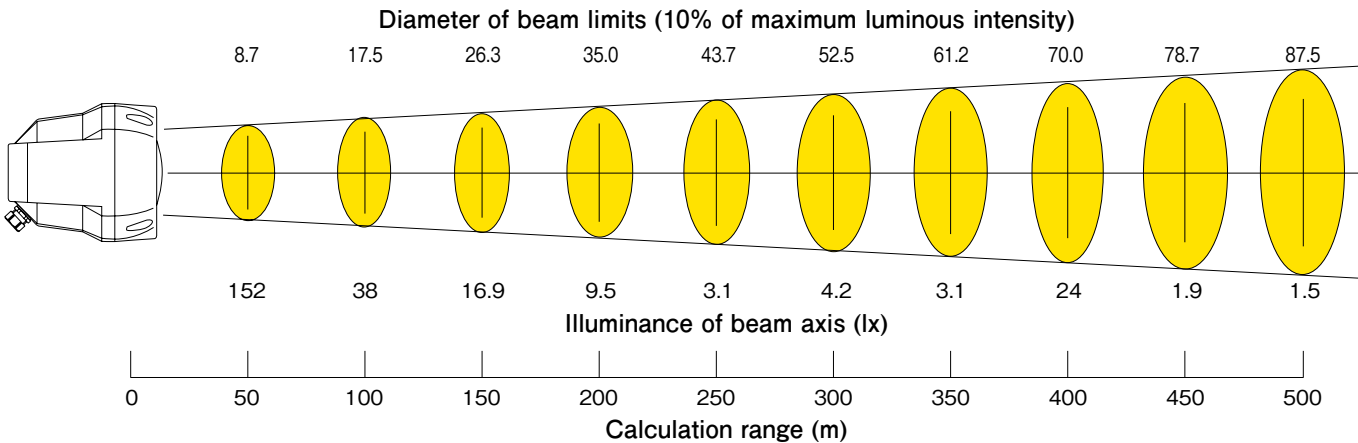
Manual control type  
(RGL40D)



Cabin control type  
(RGL40C)

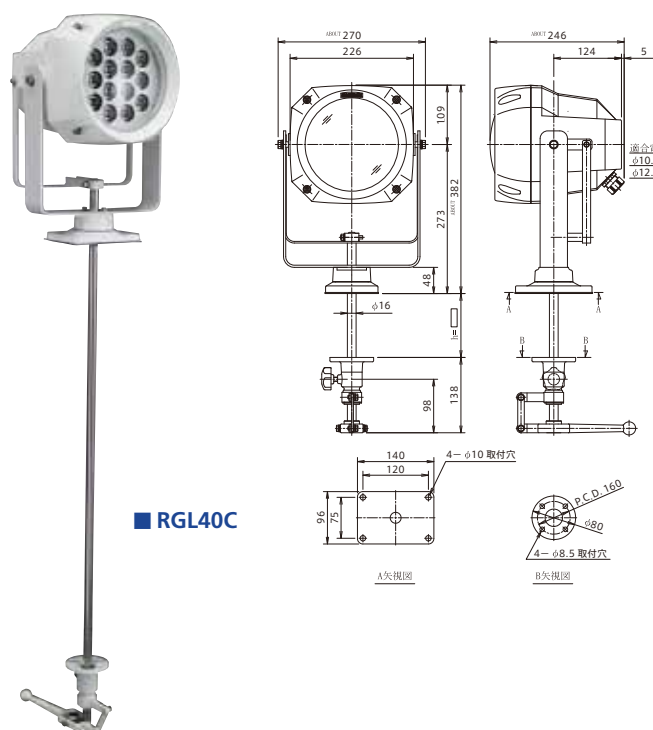
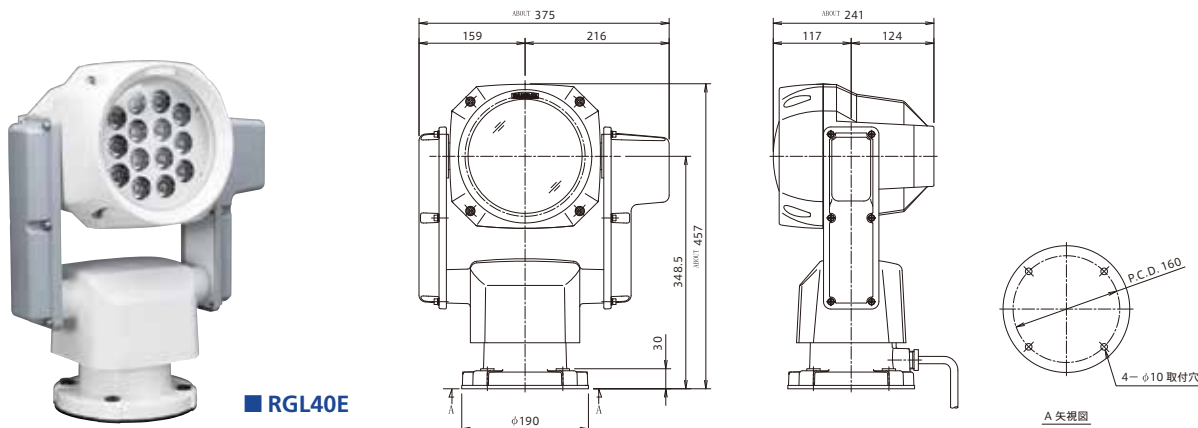


Model		RGL40E	RGL40D	RGL40C
Elevation angle	Down	45°	45 (°Without stopper)	30°
	Up	15°	45 (°Without stopper)	30°
Input Voltage		DC24V	DC24V	DC24V
Turning angle		Left and right 170°	Left and right 30°	Left and right 180°(without stopper)
Elevation speed		Approx. 3.8°/sec.	—	—
Turning speed		Approx. 20°/sec.	—	—
Focus adjustment		Fixed	Fixed	Fixed
Protection degree		IP56	IP56	IP56
Color		Mumsell N-9.5(White)	Mumsell N-9.5(White)	Mumsell N-9.5(White)
Remote control panel		CPF195	—	—
Weight		13.0kg	7.5kg	14.1kg
Code(DC24V)		1170E	1170C	1170D

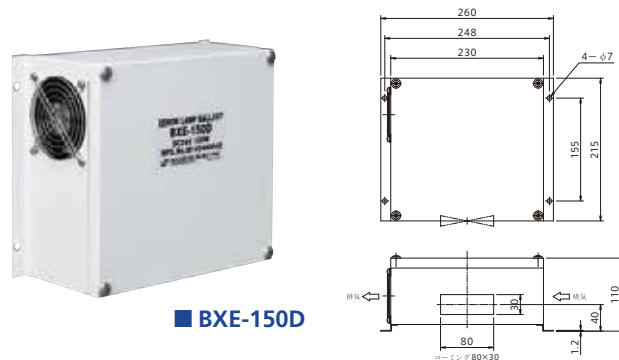


# ROBO MODULAR SEARCHLIGHTS LED

Please see below for specifications.



## Ballast & Switching power supply



## Control Panel Options

### Main control panel



### Sub control panel



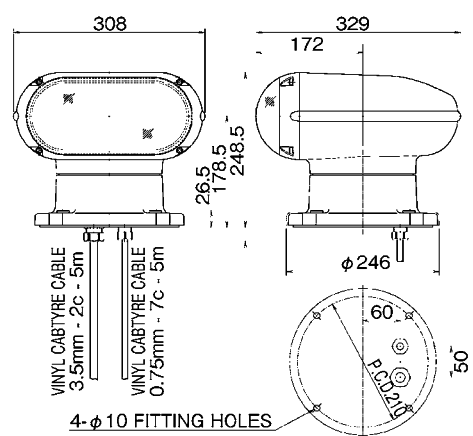
# HR-1170 METAL HALIDE

Designed to blend in with the concept of today's yachts with a new elliptically shaped front lens to compliment the stylish design. The robust casting is made from die cast aluminium and finished in a hard white coating. The reflectors are optically perfect mirrors, which projects one million candle power for up to 1000 metres through the new elliptical lens. The remote control panel has an on-off switch and joystick control, dual speed for rotation and elevation with an optional dual station. Standard with main control panel.

AMI Code	Description	Sub control panel
1440065	HR-1170 DC12/24V 35W	1440904 Sub control panel For HR-1170 12/24V

Reflector dia.	φ110mm - 90cut
Rated voltage	DC12V / DC24V
Rated current	Approx.8A / Approx. 4A
Lamps	Metal halide lamp 35Wx2 SCB-0155
Max. luminous intensity	600,000cd
Beam spread	Approx.7°
Range (1lx)	Approx.700m
Elevation & Turning	Electric remote control
Elevation angle	Up 15° Down 30°
Turning angle	360°(endless)
Elevation speed	Up approx. 7° / sec. Down approx. 6° / sec.
Turning speed	High approx. 30°/sec. Down approx. 11°/sec
Material	Aluminum alloy die casting
Protection degree	IP56
Weight	13.5kg
Color	Munsell N-9.5 (White)
Code no.	1122

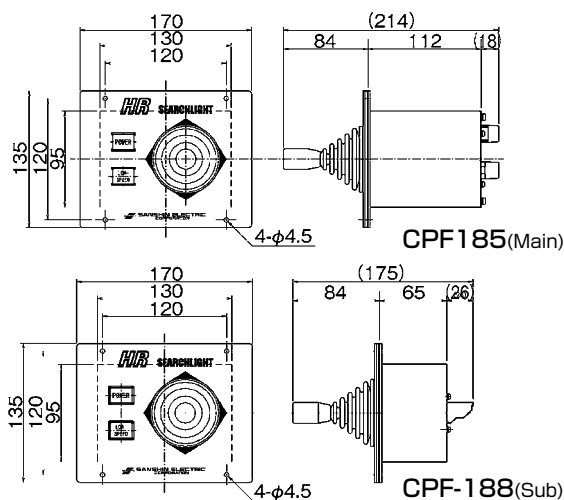
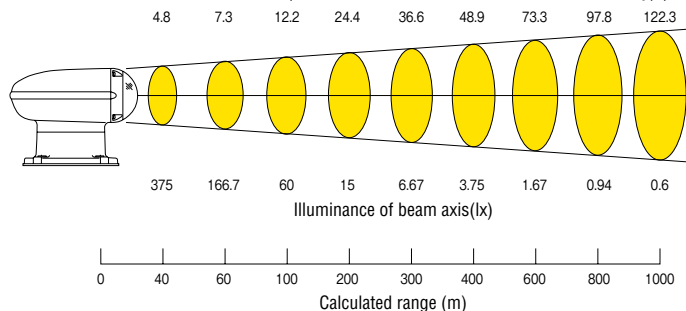
Dimension and specification are remote control type



## Range of 35W×2 metal halide searchlight

- Lamp ... 35W×2 metal halide lamp
- Max. luminous intensity ... 600,000cd
- Beam spread ... 7°
- Atmospheric transmission factor ... 100%

Diameter of beam limits(Beam limits are 10% maximum luminous intensity) (mΦ)



## Remote control panel CPF185 (Main)



Available 2-station control by a sub remote control panel (Option)



# HRM-150 METAL HALIDE

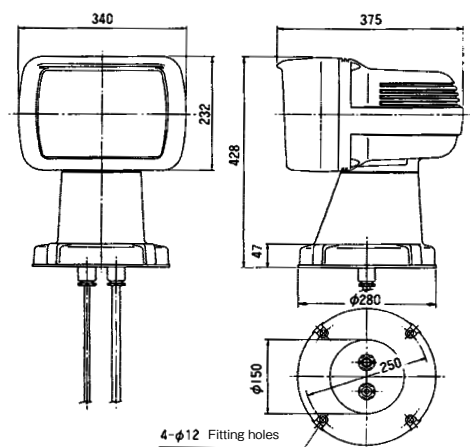
This super searchlight is the ultimate in modern technology, designed not only for the mega yachts, but used widely in commercial applications. The casting is made from die cast aluminium and finished in a hard white coating. The reflector is an optically perfect mirror which projects 1.5 million candlepower for up to 1200 metres. The remote control panel is simple, with an on - off switch and a joystick for rotation, elevation and adjusting the focus of the Metal halide 150W lamp.

AMI Code	Description
1440855	HRM-150 DC24V 150W

Reflector dia.	φ218mm - 150cut
Rated voltage	DC24V
Rated current	7.5A
Lamps	Metal halide lamp 150W
Max. luminous intensity	1,550,000cd
Ballast	Built-in
Beam spread	Approx. 5°
Range (1lx)	Approx. 1200m
Focus adjustment	Electric remote control
Elevation & Turning	Electric remote control
Elevation angle	Up 30° Down 18°
Turning angle	360° (endless)
Elevation speed	Approx. 7.5°/sec.
Turning speed	High approx. 27°/sec. Down approx. 11°/sec.
Material	Aluminum alloy die casting
Protection degree	IP56
Weight	24kg
Color	Munsell N-9.5 (White)
Code no.	1120



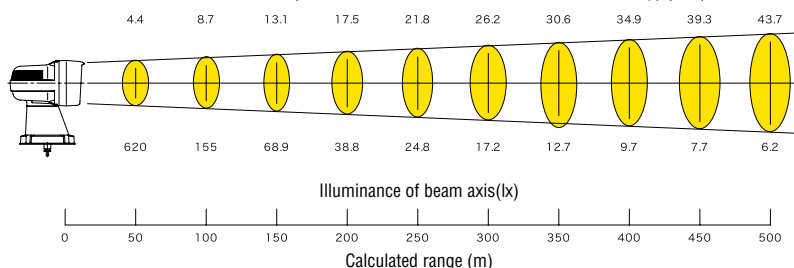
Dimension and specification are remote control type



## Range of 150W Metal Halide search light

- Lamp ... 150W metal halide lamp MS150G13
- Max. luminous intensity ... 1,550,000cd
- Beam spread ... 5°
- Atmospheric transmission factor ... 100%

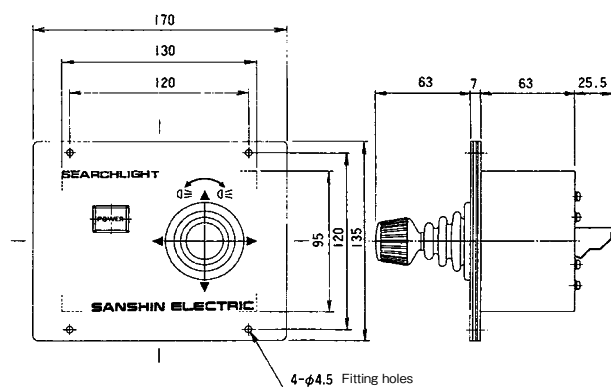
Diameter of beam limits (Beam limits are 10% maximum luminous intensity) (mΦ)



## Remote control panel



Available 2-station control by a sub remote control panel (Option)



CPF99 Main & Sub common

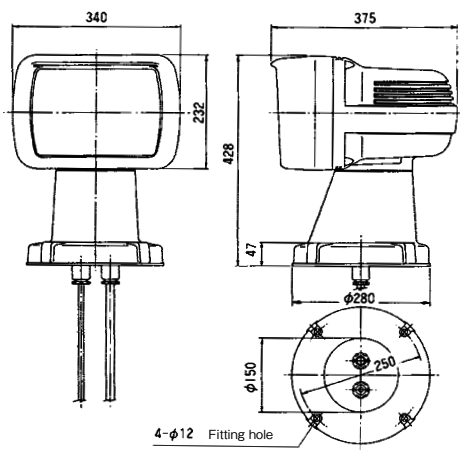
# HRX-150 XENON

This super searchlight is the ultimate in modern technology, designed not only for the mega yachts, but used widely in commercial applications. The casting is made from die cast aluminium and finished in a hard white coating. The reflector is an optically perfect mirror which projects 6 million candlepower for up to 3000 metres. The remote control panel is simple, with an on - off switch and a joystick for rotation, elevation and adjusting the focus of the Xenon bulb. This is the ultimate searchlight in design and technology. Standard with main control panel.

AMI Code	Description	Sub control panel
1440070	HRX-150 DC24V 150W	1440908 For HRX-150 sub control panel

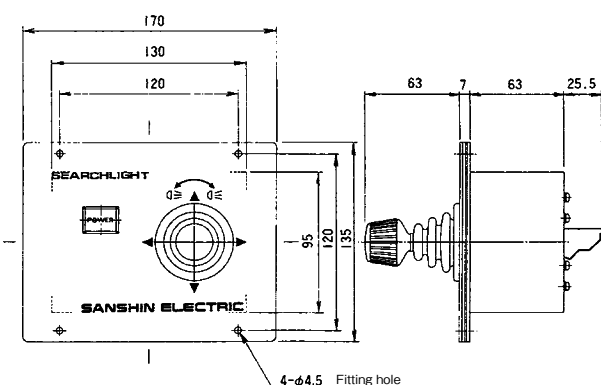
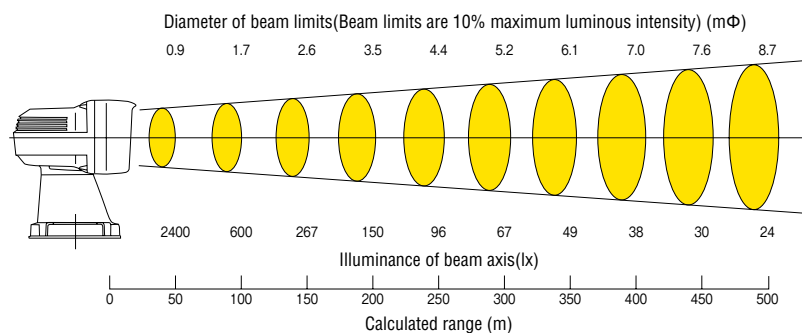
Reflector dia.	φ218mm - 150cut
Rated voltage	DC24V
Rated current	8.5A
Lamps	Xenon lamp 150W
Max. luminous intensity	6,000,000cd
Ballast	Built-in
Beam spread	Approx. 1°
Range (1lx)	Approx. 2400m
Focus adjustment	Electric remote control
Elevation & Turning	Electric remote control
Elevation angle	Up 18° Down 30°
Turning angle	360° (endless)
Elevation speed	Approx. 7.5°/sec.
Turning speed	High approx. 24°/sec. Down approx. 11°/sec.
Material	Aluminum alloy die casting
Protection degree	IP56
Weight	24kg
Color	Munsell N-9.5 (White)
Code no.	11082A

Dimension and specification are remote control type



## Range of 150W xenon search light

- Lamp ... 150W xenon lamp
- Beam spread ... 1°
- Max. luminous intensity ... 6,000,000cd
- Atmospheric transmission factor ... 100%



## Remote control panel



CPF99 Main & Sub common

Available 2-station control by a sub remote control panel (Option)

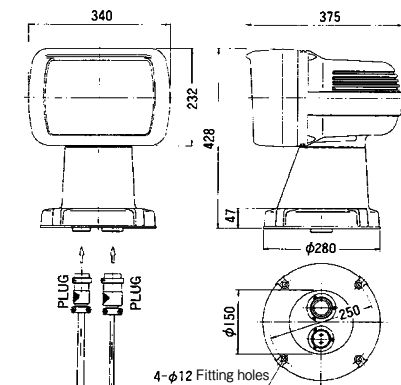
# HRX-300 XENON

With this model we offer an extremely efficient Xenon spotlight. It should be emphasised that this search-spotlight has exceptional luminous power. The HRX-300 automatically turns back to it's originally fixed basic position. Standard with main control panel.

AMI Code	Description	Sub control panel
1440072	HRX-300 AC100V 300W	1440910 HRX-300 Sub control panel
1440072	HRX-300 A220V 300W	

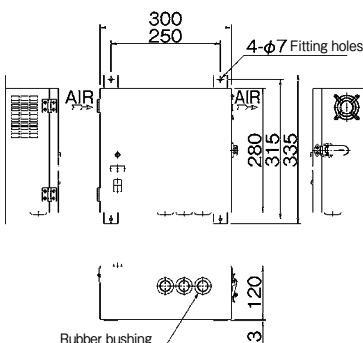
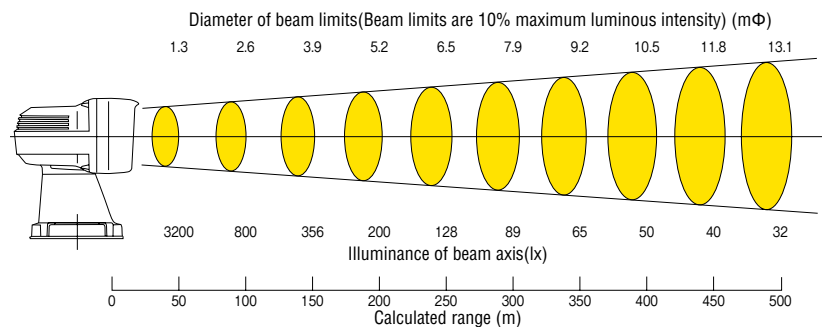
Reflector dia.	φ218mm - 150cut
Lamps	Xenon lamp 300W
Max. luminous intensity	8,000,000cd
Beam spread	Approx. 15°
Range (1lx)	Approx. 2800m
Focus adjustment	Electric remote control
Elevation & Turning	Electric remote control
Elevation angle	Up 20° Down 22°
Turning angle	360°(endless)
Elevation speed	Up approx. 3.6° / sec. Down approx. 1.8° / sec.
Turning speed	High approx. 24° / sec. Low approx. 25° / sec.
Material	Aluminum alloy die casting
Protection degree	IP56
Weight	24kg
Color	Munsell N-9.5 (White)
Code no.	1100-3(100V) 1100-4(220V)

Dimension and specification are remote control type



## Range of 300W xenon search light

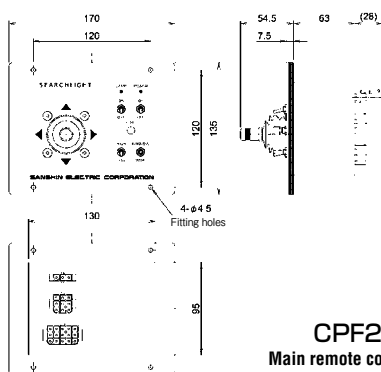
- Lamp ... 300W xenon lamp
- Beam spread ... 1.5°
- Max. luminous intensity ... 8,000,000cd
- Atmospheric transmission factor ... 100%



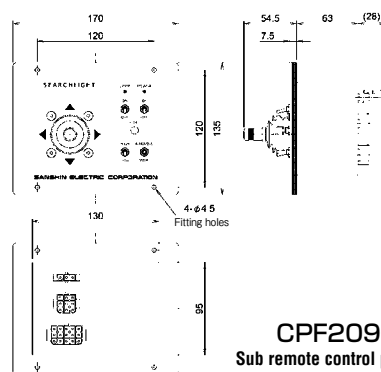
Model	BXE-301	BXE-302
Rated voltage	AC100V ±10%	AC220V ±10%
Phase	1	
Frequency	50/60Hz	
Input power	640VA	
Input current	6.4A	2.9A
Cooling system	Force air cooling	
Protection degree	IP11	
Weight	8.2kg	
Code no.	1110-5	1110-6



BXE-301/2



CPF205  
Main remote control panel



CPF209  
Sub remote control panel

## Remote control panel CPF205



Available 2-station control by a sub remote control panel (Option)

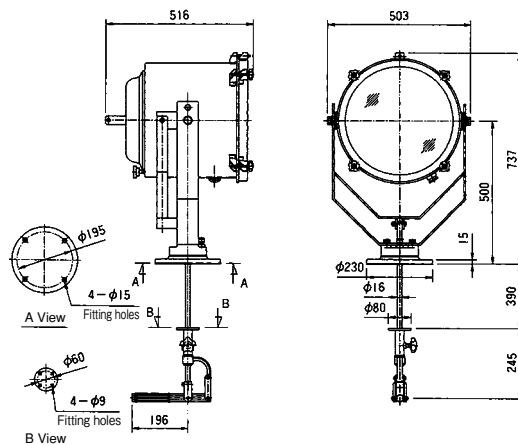
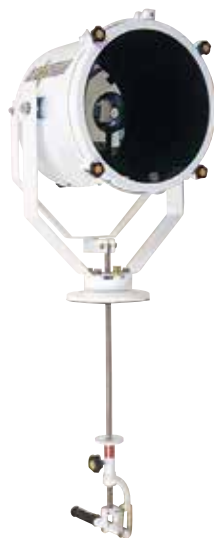
# Cabin Control Type BCT-30SU

The 30SU Series light is easy to operate with a light weight operation and compact size. Available in halogen or high efficiency lamp type upon request. Colour standard white (Munsell N-9.5), Powerful range of approximately 700m in distance. Standard inclusion searchlight, shaft and lamp only.

AMI Code	Description
1440708	S/Light 30SU CABCTL Incand No Globe 1000

## Cabin control type BCT-30SU

Reflector dia.	$\phi 340\text{mm}$	
Lamp	T64 E39/45 1000W	
Voltage	AC100V/AC220V	
Max. luminous intensity	100V	500,000cd
	220V	500,000cd
Range of distance	Approx. 700m	
Beam spread	Approx. 8°	
Elevation angle	Up 30° Down 30°	
Turning angle	Right & left each 180°	
Protection degree	IP56	
Weight	29kg	
Code no.	1033-4	



## Our Branches:

**AMI Sales Western Australia**  
(Head Office)  
107 Forsyth Street  
O'Connor WA 6163  
Ph: (08) 9331 0000  
Fax: (08) 9314 2929  
E: [ami@amisales.com.au](mailto:ami@amisales.com.au)

**AMI Sales Gold Coast**  
Unit 1/14 Hopper Avenue,  
Ormeau, QLD 4208  
Ph: (07) 5540 6800  
Fax: (07) 5546 7044  
E: [qld@amisales.com.au](mailto:qld@amisales.com.au)

**AMI Sales Gold Coast  
Showroom**  
F34 -Gold Coast City Marina,  
Coomera, QLD 4209  
Ph: (07) 5540 6880  
Fax: (07) 5546 7044  
E: [qld@amisales.com.au](mailto:qld@amisales.com.au)

**AMI Sales New South Wales**  
Compass Business Park  
Unit 202, 27 Mars Road  
Lane Cove West, NSW 2066  
Ph: (02) 9816 7100  
Fax: (02) 9816 7155  
E: [nsw@amisales.com.au](mailto:nsw@amisales.com.au)

**AMI Sales South Australia**  
12 Brock Street Port Adelaide,  
South Australia 5015  
Ph: (08) 8249 3200  
Fax: (08) 8249 3205  
E: [sa@amisales.com.au](mailto:sa@amisales.com.au)

**AMI Sales South Victoria**  
Unit 1, 13 Simcock Street  
Somerville, VIC 3912  
Ph: (03) 5978 0143  
Fax: (03) 8640 0595  
E: [vic@amisales.com.au](mailto:vic@amisales.com.au)

**Darwin - Nautical Supplies**  
80 Frances Bay Drive  
Darwin, NT 0800  
Ph: (08) 8981 6651  
Fax: (08) 8941 0251  
E: [sales@nauticalsupplies.com.au](mailto:sales@nauticalsupplies.com.au)

**Cairns - i.Power**  
21 Tingira Street Portsmith,  
Cairns, QLD 4870  
Ph: (07) 4050 0000  
Fax: (07) 4050 0055  
E: [sales@ipowersolutions.com.au](mailto:sales@ipowersolutions.com.au)